

Spinal system



VISHAL
SURGITECH PVT. LTD.



Company Profile

VISHAL SURGITECH is one of the most reputed and rapidly growing orthopedic companies In India. We have been in business for more than a decade and have been continuously innovating and improving our products. Our main focus areas are Surgical instruments and implants and of late we have also been diversifying in the design and manufacture of Surgical equipments. While our dealer network spans almost all of India.

VISHAL SURGITECH is a leading manufacturer of quality surgical equipment for high surgical requirements. Our offering includes surgical, dental that are designed as per the international quality standards & medical parameters. We aspire to become a Global Healthcare' brand identity synonymous with nurturing healthcare, eternal values, strong ethics and global quality of highest standards in surgical equipment.

We are manufacturing all types of EXTERNAL FIXTURES, TRAUMA IMPLANTS, SPINAL IMPLANTS & INSTRUMENT.

VISHAL SURGITECH is known synonymous with high quality, efficient service and close correspondence with its customers. Its success depends upon those who work for it and equally on those who work with it.





SINGAL LOCK MONO SCREW 4.5mm (5mm ROD)

CAT. NO.	VSP-001	VSPT-001
Material	SS – 316L	Titanium
Size	4.5mm	
Length	25.0 to 50.0 mm (Diff. 5.0mm)	



SINGAL LOCK MONO SCREW 6.5mm (5mm ROD)

CAT. NO.	VSP-003	VSPT-003
Material	SS – 316L	Titanium
Size	6.5mm	
Length	25.0 to 50.0mm (Diff. 5.0mm)	



SINGAL LOCK MONO SCREW 5.5mm (5mm ROD)

CAT. NO.	VSP-002	VSPT-002
Material	SS – 316L	Titanium
Size	5.5mm	
Length	25.0 to 50.0mm (Diff. 5.0mm)	



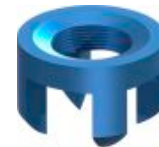
CONNECTING ROD 5mm, 3mm

CAT. NO.	VSP-008 / 007	VSPT-008 / 007
Material	SS – 316L	Titanium
Size	5mm, 3 mm	
Length 5mm	50.0 to 400.0mm (diff. 10.0mm)	
Length 3mm	30.0 to 100.0mm (diff. 10.0mm)	



SINGAL LOCK POLY SCREW 4.5mm (5mm ROD)

CAT. NO.	VSP-004	VSPT-004
Material	SS – 316L	Titanium
Size	4.5mm	
Length	25.0 to 50.0mm (Diff. 5.0mm)	



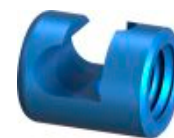
STEPLE FOR SINGAL LOCK SCREW

CAT. NO.	VSPT-016
Material	Titanium
Size	Standard
Length	Standard



SINGAL LOCK POLY SCREW 5.5mm (5mm ROD)

CAT. NO.	VSP-005	VSPT-005
Material	SS – 316L	Titanium
Size	5.5mm	
Length	25.0 to 50.0mm (Diff. 5.0mm)	



TRANSVERVE CONNECTOR

CAT. NO.	VSPT-017
Material	Titanium
Diameter	Standard
Length	Standard



SINGAL LOCK POLY SCREW 6.5mm (5mm ROD)

CAT. NO.	VSP-006	VSPT-006
Material	SS – 316L	Titanium
Size	6.5mm	
Length	25.0 to 50.0mm (Diff. 5.0mm)	



REDUCTION MONO SCREW

CAT. NO.	VSP-25,26,27	VSPT-25,26,27
Material	SS – 316L	Titanium
Size	4.5, 5.5, 6.5mm	
Length	25mm to 50mm (5mm Diff.)	



REDUCTION POLY SCREW

CAT. NO.	VSP-28,29,30	VSPT-28,29,30
Material	SS – 316L	Titanium
Size	4.5, 5.5, 6.5mm	
Length	25mm to 50mm (5mm Diff.)	



TLIF(KIDNEY) CAGE

CAT. NO.	VSPT-(039,040,041)
Material	Titanium
Size	4', 8', 11'
Length	7,8,9,10,11mm



CERVICAL PLATE

CAT. NO.	VSPT-032
Material	Titanium
Size	Standard
Length	23.5mm to 75mm (2.5mm Diff.)



PLIF CAGE

CAT. NO.	VSPT-042
Material	Titanium
Size	20mm & 25mm
Length	7,8,9,10,11mm



CERVICAL SCREW

CAT. NO.	VSPT-033
Material	Titanium
Size	4mm
Length	10,12,14,16,18,20,22mm



TLIF CAGE

CAT. NO.	VSPT-048
Material	Titanium
Size	4', 8', 11'
Length	7,8,9,10,11mm



ECO CAGE

CAT. NO.	VSPT-034
Material	Titanium
Size	10,12,14,16,18mm
Length	25mm & 50mm



RE - CAGE

CAT. NO.	VSPT-044
Material	Titanium
Size	4' , 8' , 11'
Length	7,8,9,10,11mm



EXPANDABLE CAGE

CAT. NO.	VSPT-049
Material	Titanium
Size	10,11,12,13,14,15,16,17,18mm
Length	20x25, 25x35, 35x55, 55x75mm



PEDICLE HOOK

CAT. NO.	VSPT-052
Material	Titanium



LEMNAR HOOK REDUCED DISTANCE

CAT. NO.	VSPT-050
Material	Titanium



LEMNAR HOOK ANGLE BLADE

CAT. NO.	VSPT-053
Material	Titanium



LEMNAR HOOK NARROW BLADE

CAT. NO.	VSPT-051
Material	Titanium



LEMNAR HOOK WIDE BLADE

CAT. NO.	VSPT-054
Material	Titanium



MONO SCREW DRIVER

CAT. NO. VSI-001-125



POLY SCREW DRIVER

CAT. NO. VSI-002-125



PEDICAL CENTRALISER

CAT. NO. VSI-004-001



SPINE TAP

CAT. NO. VSI-003-(054,055,065)



SIMPLE ROD HOLDER

CAT. NO. VSI-004-003



REDUCTION SCREW TAB REMOVER

CAT. NO. VSI-004-005



BONE AWL

CAT. NO. VSI-004-008



PEDICAL SOUND

CAT. NO. VSI-004-009



PROB CURVE

CAT. NO. VSI-004-010



PROB FLAT

CAT. NO. VSI-004-011



D-TORQUE

CAT. NO. VSI-004-012



VICE GRIP

CAT. NO. VSI-004-013



INNER SCREW INSERTER

CAT. NO. VSI-004-014



CLOSED ROD PUSHER

CAT. NO. VSI-004-015



OPEN ROD PUSHER

CAT. NO. VSI-004-016



ROD BENDER

CAT. NO. VSI-004-017



DISTRACTOR STRAIGHT

CAT. NO. VSI-004-018



COMPRESSOR ANGLE

CAT. NO. VSI-004-019



QUICK COUPLING TIGHTER

CAT. NO. VSI-004-022



SURGITTAL FORK (SMALL)

CAT. NO. VSI-004-024



SURGITTAL FORK (BIG)

CAT. NO. VSI-004-025



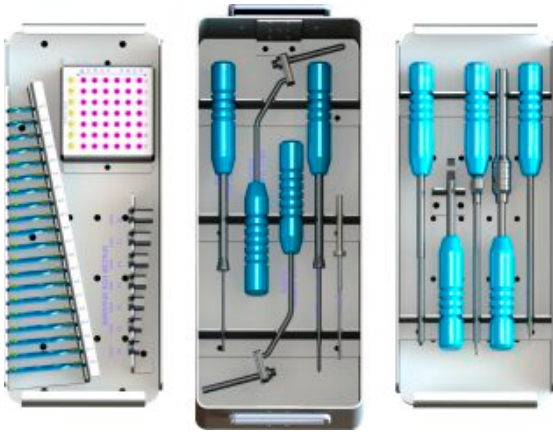
CURVED ROD PUSHER

CAT. NO. VSI-004-026



3.5MM SCREW DRIVER (INNI TIGHTENER)

CAT. NO. VSI-004-027



CERVICAL BOX

CAT. NO.	VSI-007
----------	---------



SELF LOCKING SCREW DRIVER

CAT. NO.	VSI-007-002
----------	-------------



CERVICAL PLATE HOLDER

CAT. NO.	VSI-007-001
----------	-------------



LOCKING SCREW DRIVER

CAT. NO.	VSI-007-003
----------	-------------



ORDINARY SCREW DRIVER

CAT. NO.	VSI-007-004
----------	-------------



SPACER TIGHTENER

CAT. NO.	VSI-007-005
----------	-------------



DRILL GUIDE SLEEVE 2.5MM

CAT. NO.	VSI-007-006
----------	-------------



TAP GUIDE SLEEVE 4.0mm

CAT. NO.	VSI-007-007
----------	-------------



DRILL BIT 2.5MM

CAT. NO.	VSI-007-008
----------	-------------



DRILL BIT 2.7MM

CAT. NO.	VSI-007-009
----------	-------------



SCREW TAP 4.0mm

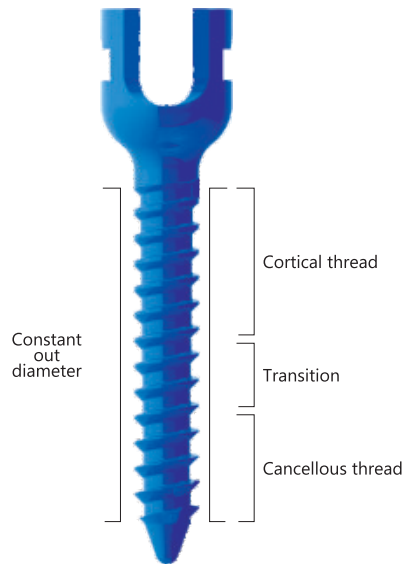
CAT. NO.	VSI-007-010
----------	-------------



SPACER FOR DRILL/TAP GUIDE SLEEVE

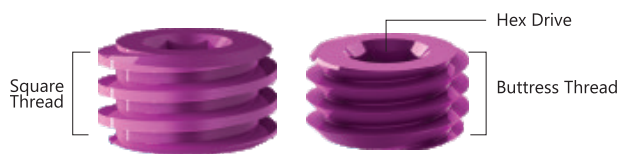
CAT. NO.	VSI-007-011
----------	-------------

Single lock Spinal system



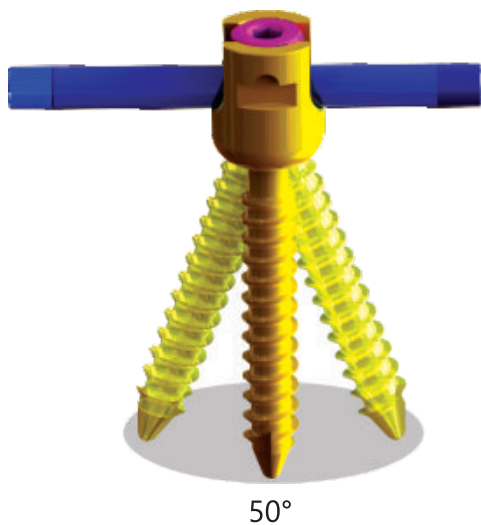
Single lock spinal system

- Top loading preassembled pedicle screw system for stabilization of spine
- Dual core screw – MONO SCREW
- Dual core thread design
- Constant outer diameter
- Cortical thread engages the pedical
- Cancellous thread engages the vertebral body
- Transition zone for core diameter change
- Optimizes bone purchase
- Double lead thread speeds insertion of 4.5mm, 5.5mm and 6.5mm screw
- Self tapping tip



Locking cap

- Buttress thread/ square thread for more gripping with screw
- Hex drive



Poly axial head – POLY AXIAL SCREW

- Top-loading for easy rod introduction
- Poly axial head offers a 50° cone of angulation about the axis of the screw allowing the implants to adjust readily to the rod
- Rod snaps into head to stabilize construct before locking cap installation



VISHAL
SURGITECH PVT. LTD.

Plot no.-10, Serve no.-235, Mayur Marble Street
N/r Old Tall Post, Gondal Road NH-8B,
Kotharia, Rajkot 360005 (Gujarat-INDIA)
Ph.: - +91 (0)281 2926277, +91 955 88 02428
E-Mail: sales@vishalsurgitech.com
web: - www.vishalsurgitech.com